




Recess Punches
& Fastener Tooling



**REG
ELLEN
MACHINE TOOL CORP.**

2135 Kishwaukee St.

Rockford, IL. 61104

(815) 964-0099

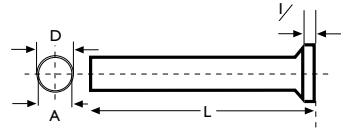
Fax: (815) 964-0482

www.regellen.com

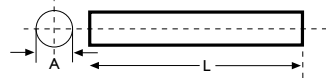
Ejector Pins



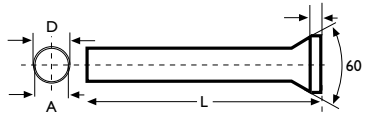
Ejector pin without head
M2 high speed material.
R/C 62/64



Ejector pin with head
M2 high speed material.
R/C 62/64
D=A + .010-.025



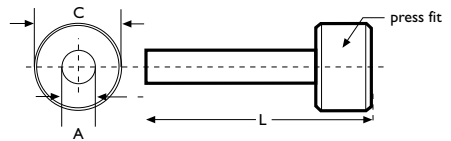
Ejector pin with button assembly
Pin: M2 high speed material
R/C 62-64
Button: Material - H/T as specified



Ejector pin with 60° head
M2 high speed material.
R/C 62/64

"D" varies with "A" as follows:

A	D
.059-.156	A + .020 min
.1565-.236	A + .025 min
.2365-.453	A + .040 min
.4345 up	A + .060 min



Specify style, diameter and length when ordering



Tooling International Ltd. Unit 8, Speedwell Trading Estate,
102 Kings Road Tyseley, Birmingham, England B11 2AT.

Tel: +44 (0) 121 771 0611 Fax: +44 (0) 121 773 6588
Web: www.tooling-international.co.uk Email: til@enterprise.net

**REG
ELLEN**
MACHINE TOOL CORP.

Phone: 815-964-0099

Fax: 815-964-0482

E-mail: sales@regellen.com

Web: www.regellen.com

