




Recess Punches
& Fastener Tooling



**REG
ELLEN
MACHINE TOOL CORP.**

2135 Kishwaukee St.

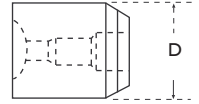
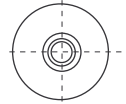
Rockford, IL. 61104

(815) 964-0099

Fax: (815) 964-0482

www.regellen.com

Holders for Torx® & Torx Plus® Punch Pins (Metric)

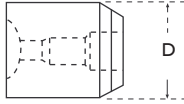
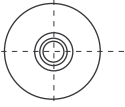


Button Head

DRIVE SIZE	HOLDER TMP-36 BUTTON HEAD	HEAD STYLE		
		BOWL DIA.	THEORETICAL BOWL DEPTH	HOLDER DIA. D
T10	10-TMI-302	-	-	14.288 14.274
T10	10-TMI-302A	6.67/6.78	1.70	14.288 14.274
T15	15-TMI-320	7.62/7.73	1.96	14.288 14.274
T25	25-TMI-302	9.52/9.63	2.46	22.225 22.212
T27	27-TMI-302	10.51/10.62	2.92	22.225 22.212
T30	30-TMI-302	10.52/10.63	2.92	22.237 22.212
T40	40-TMI-302	14.02/14.13	3.99	25.400 25.387
T45	45-TMI-302	17.52/17.63	5.11	25.400 25.387
T50	50-TMI-302	17.52/17.63	5.11	25.412 25.387
T55	55-TMI-320	21.03/21.14	6.17	38.100 38.087
T55	55-TMI-302	24.52/24.63	7.28	38.100 38.087
T60	60-TMI-302	28.01/28.12	8.18	38.100 38.087



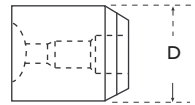
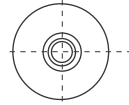
Holders for Torx® & Torx Plus® Punch Pins (Metric)



Oval Head

HEAD STYLE				
DRIVE SIZE	HOLDER TMP-47 OVAL HEAD (EUROPE)	BOWL DIA.	THEORETICAL BOWL DEPTH	HOLDER DIA. D
T10	10-TMI-351	6.90/7.01	0.90	14.300
				14.274
T10	10-TMI-352	5.80/5.91	0.50	14.300
				14.274
T15	15-TMI-351	6.60/6.71	0.68	14.300
				14.274
T15	15-TMI-352	7.60/7.71	0.98	14.300
				14.274
T20	20-TMI-351	7.60/7.71	0.75	14.300
				14.274
T20	20-TMI-352	9.90/10.01	0.81	14.300
				14.274
T20	20-TMI-353	8.10/8.21	1.00	14.300
				14.274
T25	25-TMI-351	9.30/9.41	0.94	22.237
				22.212
T25	25-TMI-352	10.90/11.01	1.28	22.237
				22.212
T30	30-TMI-351	11.10/11.21	1.13	22.237
				22.212
T30	30-TMI-352	12.10/12.21	1.50	22.237
				22.212
T30	30-TMI-353	14.10/14.21	1.75	22.237
				22.212
T40	40-TMI-352	16.10/16.21	2.00	22.237
				22.212
T45	45-TMI-351	14.60/14.71	1.50	25.412
				25.387
T50	50-TMI-351	20.10/20.21	2.50	25.412
				25.387
T50	50-TMI-352	24.10/24.21	3.00	25.412
				25.387

Holders for Torx® & Torx Plus® Punch Pins (Metric)

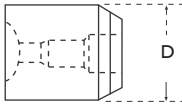
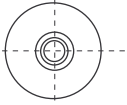


Pan Head (Full Crown)

HEAD STYLE				
DRIVE SIZE	HOLDER TMP-48 PANHEAD (FULL CROWN) FOR EUROPE	BOWL DIA.	THEORETICAL BOWL DEPTH	HOLDER DIA. D
T10	10-TMI-340	6.42/6.53	0.68	14.300
				14.274
T10	10-TMI-341	7.49/7.60	0.88	14.300
				14.274
T15	15-TMI-340	8.02/8.13	1.24	14.300
				14.274
T20	20-TMI-340	8.77/8.88	0.99	14.300
				14.274
T20	20-TMI-341	10.16/10.27	1.20	14.300
				14.274
T20	20-TMI-342	7.49/7.60	0.66	14.300
				14.274
T25	25-TMI-340	10.16/10.27	1.54	22.237
				22.212
T25	25-TMI-341	11.55/11.66	1.90	22.237
				22.212
T25	25-TMI-342	10.70/10.81	1.16	22.237
				22.212
T30	30-TMI-340	13.37/13.48	2.11	22.237
				22.212
T30	30-TMI-341	12.84/12.95	1.36	22.237
				22.212
T30	30-TMI-342	11.55/11.66	1.29	22.237
				22.212
T30	30-TMI-343	14.98/15.09	2.17	22.237
				22.212
T40	40-TMI-341	14.98/15.09	1.54	22.237
				22.212
T45	45-TMI-340	17.12/17.23	1.93	22.237
				22.212
T50	50-TMI-340	21.40/21.51	2.32	25.412
				25.387
T50	50-TMI-341	19.26/19.37	1.92	25.412
				25.387
T50	50-TMI-342	25.68/25.79	3.30	25.412
				25.387



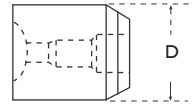
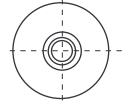
Holders for Torx® & Torx Plus® Punch Pins (Metric)



Struck Slot Pan Head

HEAD STYLE				
DRIVE SIZE	HOLDER TMP-49B STRUCK SLOT PANHEAD FOR EUROPE	BOWL DIA.	THEORETICAL BOWL DEPTH	HOLDER DIA. D
T8	8-TMI-272	5.35/5.46	0.69	14.300 14.274
T10	10-TMI-272	6.42/6.53	0.68	14.300 14.274
T10	10-TMI-273	7.49/7.60	0.88	14.300 14.274
T15	15-TMI-271	7.49/7.60	0.78	14.300 14.274
T20	20-TMI-272	8.56/8.67	0.91	14.300 14.274
T20	20-TMI-273	10.70/10.81	1.38	14.300 14.274
T25	25-TMI-271	10.70/10.81	1.16	22.237 22.212
T30	30-TMI-272	12.84/12.95	1.38	22.237 22.212
T30	30-TMI-273	14.98/15.09	1.38	22.237 22.212
T40	40-TMI-272	17.12/17.23	1.63	25.412 25.387
T50	50-TMI-272	21.40/21.51	2.70	31.762 31.737
T50	50-TMI-273	25.69/25.79	3.30	31.762 31.737

Holders for Torx® & Torx Plus® Punch Pins (Metric)



Round Washer Head

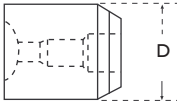
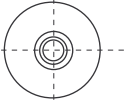
HEAD STYLE				
DRIVE SIZE	HOLDER TXP-50 ROUND WASHER HEAD FOR EUROPE	BOWL DIA.	THEORETICAL BOWL DEPTH	HOLDER DIA. D
T10	10-TMI-281	5.54/5.65	1.10	14.300
				14.274
T10	10-TMI-282	6.94/7.05	1.40	14.300
				14.274
T20	20-TMI-281	7.94/8.05	1.50	14.300
				14.274
T20	20-TMI-282	9.64/9.75	1.60	14.300
				14.274
T20	20-TMI-283	8.44/8.55	1.70	14.300
				14.274
T30	30-TMI-282	12.94/13.05	2.90	22.237
				22.212
T40	40-TMI-281	14.94/15.05	2.90	22.237
				22.212
T50	50-TMI-281	16.94/17.05	3.00	25.412
				25.387

Pan Head Full Crown

HEAD STYLE				
DRIVE SIZE	HOLDER TXP-51 PAN HEAD (FULL CROWN)	BOWL DIA.	THEORETICAL BOWL DEPTH	HOLDER DIA. D
T10	10-TMI-307	5.90/6.00	1.298	14.300
				14.274
T15	15-TMI-307	7.35/7.45	1.258	14.300
				14.274
T20	20-TMI-307	8.40/8.50	1.550	14.300
				14.274
T25	25-TMI-307	11.55/11.65	3.810	22.237
				22.212
T25	25-TMI-307A	10.00/10.10	2.470	22.237
				22.212
T30	30-TMI-307	12.60/12.70	2.290	22.237
				22.212
T40	40-TMI-307	16.80/16.90	2.760	22.237
				22.212
T50	50-TMI-307	21.00/21.10	3.560	25.412
				25.387



Holders for Torx® & Torx Plus® Punch Pins (Metric)



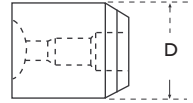
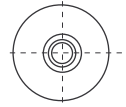
Oval Head

HEAD STYLE				
DRIVE SIZE	HOLDER TMP-52 OVAL HEAD	BOWL DIA.	THEORETICAL BOWL DEPTH	HOLDER DIA. D
T10	10-TMI-332	6.30/6.40	0.53	14.300 14.274
T15	15-TMI-332	8.20/8.30	0.60	14.300 14.274
T20	20-TMI-332	9.40/9.50	0.75	14.300 14.274
T25	25-TMI-332	10.40/10.50	0.90	22.237 22.212
T25	25-TMI-333	11.50/11.60	0.98	22.237 22.212
T30	30-TMI-332	12.60/12.70	1.05	22.237 22.212
T40	40-TMI-332	17.30/17.40	1.50	22.237 22.212
T50	50-TMI-332	20.00/20.10	1.73	25.412 25.387

Pan Head Full Crown

HEAD STYLE				
DRIVE SIZE	HOLDER TXP-51A PAN HEAD (FULL CROWN)	BOWL DIA.	THEORETICAL BOWL DEPTH	HOLDER DIA. D
T10	10-TMI-308	5.40/5.50	0.82	14.300 14.274
T15	15-TMI-308	6.70/6.80	0.83	14.300 14.274
T20	20-TMI-308	7.75/7.85	1.06	14.300 14.274
T25	25-TMI-308	9.25/9.35	1.27	22.237 22.212
T25	25-TMI-308A	10.70/10.80	1.39	22.237 22.212
T30	30-TMI-308	11.70/11.80	1.63	22.237 22.212
T40	40-TMI-308	15.70/15.80	2.12	22.237 22.212
T50	50-TMI-308	19.65/19.75	2.71	25.412 25.387

Holders for Torx® & Torx Plus® Punch Pins (Metric)

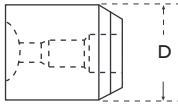
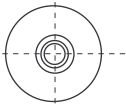


Countersunk Trim Head

HEAD STYLE				
DRIVE SIZE	HOLDER TMP-53 COUNTERSUNK TRIM HEAD	BOWL DIA.	THEORETICAL BOWL DEPTH	HOLDER DIA. D
T10	10-TMI-313	6.40/6.50	0.52	14.300
				14.274
T15	15-TMI-313	7.45/7.55	0.69	14.300
				14.274
T20	20-TMI-313	8.50/8.60	0.87	14.300
				14.274
T25	25-TMI-313	10.10/10.20	1.02	22.237
				22.212



Holders for Torx® & Torx Plus® Punch Pins (Metric)

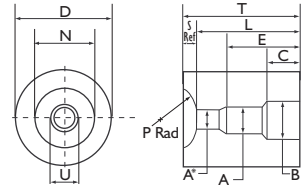


Truss Head

HEAD STYLE

DRIVE SIZE	SCREW SIZE	HOLDER TMP-54 TRUSS HEAD	BOWL DIA.	THEORETICAL BOWL DEPTH	HOLDER DIA. D
T10	M3.5	10-TXI-360	8.15/8.26	1.63 14.274	14.300
T15	M4.0	15-TXI-360	9.75/9.86	1.98 14.274	14.300
T20	M5.0	20-TXI-360	11.37/11.48	2.24 14.274	14.300
T30	M6.0	30-TXI-360	14.55/14.66	2.93 22.212	22.237
T40	M8.0	40-TXI-360	17.72/17.83	3.73 22.212	22.237
T50	M10.0	50-TXI-361	20.91/21.02	5.46 31.737	31.762

Holders for Torx® & Torx Plus® Punch Pins



**Special order form.
Please photocopy and use for your
special holder requirements.**

FEATURE	SIZE	TOLERANCE IMP.
Screw Size		N/A
Torx Drive Size		N/A
Punch Insert		N/A
A		+0.0005 -0.000
B		+0.012 -0.003
C		+0.004 -0.000
D		±0.0005
E		±0.010
L		+0 -0.002
S Ref		N/A
T		+0 -0.004
U		+0.004 -0.000
N		+0.004 -0.000
P Rad.		±0.001



Tooling International Ltd. Unit 8, Speedwell Trading Estate,
102 Kings Road Tyseley, Birmingham, England B11 2AT.

Tel: +44 (0) 121 771 0611 Fax: +44 (0) 121 773 6588
Web: www.tooling-international.co.uk Email: til@enterprise.net

**REG
ELLEN**
MACHINE TOOL CORP.

Phone: 815-964-0099

Fax: 815-964-0482

E-mail: sales@regellen.com

Web: www.regellen.com

