

Recess Punches
& Fastener Tooling



**REG
ELLEN
MACHINE TOOL CORP.**

2135 Kishwaukee St.

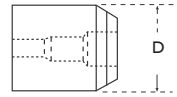
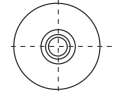
Rockford, IL. 61104

(815) 964-0099

Fax: (815) 964-0482

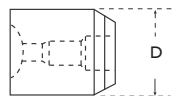
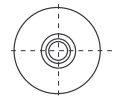
www.regellen.com

Holders for Torx® & Torx Plus® Punch Pins



Flat Head

HEAD STYLE		
DRIVE SIZE	HOLDER TXP-22 FLAT	HOLDER DIA. D
T10	10-TXI-201	.5625
T15	15-TXI-201	.5625
T20	20-TXI-201	.5625
T25	25-TXI-201	.8750
T27	27-TXI-201	.8750
T30	30-TXI-201	.8750
T40	40-TXI-201	.8750
T45	45-TXI-201	1.0000
T50	50-TXI-201	1.0000
T55	55-TXI-201	1.2500
T60	60-TXI-201	1.5000

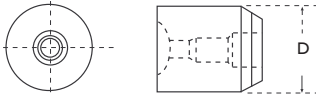


Pan Head

HEAD STYLE				
DRIVE SIZE	HOLDER TXP-33 PAN	BOWL DIA.	THEORETICAL BOWL DEPTH	HOLDER DIA. D
T10	10-TXI-303	.231/.235	.025	.5625
T15	15-TXI-303	.260/.264	.027	.5625
T20	20-TXI-303	.306/.310	.032	.5625
T25	25-TXI-303	.357/.361	.038	.8750
T27	27-TXI-303	.407/.411	.043	.8750
T30	30-TXI-303	.473/.477	.050	.8750
T40	40-TXI-303	.594/.598	.062	.8750
T45	45-TXI-303	.716/.720	.074	1.0000
T50	50-TXI-303	.836/.840	.084	1.0000
T55	55-TXI-303	.958/.962	.099	1.2500

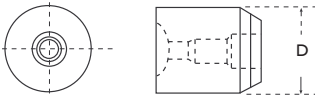


Holders for Torx® & Torx Plus® Punch Pins



Truss Head

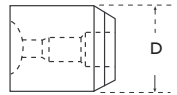
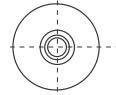
HEAD STYLE				
DRIVE SIZE	HOLDER TXP-35 TRUSS	BOWL DIA.	THEORETICAL BOWL DEPTH	HOLDER DIA. D
T10	10-TXI-360	.321/.325	.064	.5625
T15	15-TXI-360	.384/.388	.078	.5625
T20	20-TXI-360	.448/.452	.088	.5625
T25	25-TXI-360	.511/.515	.103	.8750
T27	27-TXI-360	.573/.577	.118	.8750
T30	30-TXI-360	.573/.577	.115	.8750
T40	40-TXI-360	.698/.702	.147	.8750
T45	45-TXI-360	.823/.827	.171	1.0000
T50	50-TXI-360	1.073/1.077	.230	1.5000
T55	55-TXI-360	1.198/1.202	.259	1.5000
T60	60-TXI-360	1.511/1.515	.348	1.7500



Pan Head (Full Crown)

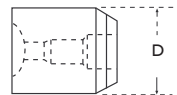
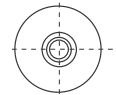
HEAD STYLE				
DRIVE SIZE	HOLDER TXP-33.5 PAN (FULL CROWN)	BOWL DIA.	THEORETICAL BOWL DEPTH	HOLDER DIA. D
T10	10-TXI-307	.264/.269	.0410	.5625
T10	10-TXI-307A	.241/.246	.0360	.5625
T15	15-TXI-307	.280/.285	.0390	.5625
T20	20-TXI-307	.346/.351	.0530	.5625
T25	25-TXI-307	.409/.414	.0655	.8750
T27	27-TXI-307	.459/.464	.0720	.8750
T30	30-TXI-307	.519/.524	.0800	.8750
T40	40-TXI-307	.665/.670	.0920	.8750
T45	45-TXI-307	.788/.793	.1040	1.0000
T50	50-TXI-307	.913/.918	.1165	1.2500
T55	55-TXI-307	1.038/1.043	.1200	1.5000

Holders for Torx® & Torx Plus® Punch Pins



Oval Head

HEAD STYLE				
DRIVE SIZE	HOLDER TXP-36 OVAL	BOWL DIA.	THEORETICAL BOWL DEPTH	HOLDER DIA. D
T10	10-TXI-350	.252/.256	.031	.5625
T15	15-TXI-350	.279/.283	.034	.5625
T20	20-TXI-350	.332/.336	.039	.5625
T25	25-TXI-350	.385/.389	.046	.8750
T27	27-TXI-350	.438/.442	.053	.8750
T30	30-TXI-350	.507/.511	.062	.8750
T40	40-TXI-350	.635/.639	.079	.8750
T45	45-TXI-350	.762/.766	.094	1.0000
T50	50-TXI-350	.812/.816	.097	1.0000
T55	55-TXI-350	1.000/1.004	.120	1.2500
T60	60-TXI-350	1.375/1.379	.162	1.5000

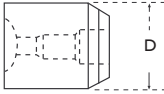
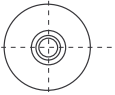


Pan Head (Full Crown)

HEAD STYLE				
DRIVE SIZE	HOLDER TXP-35.5A PAN (FULL CROWN)	BOWL DIA.	THEORETICAL BOWL DEPTH	HOLDER DIA. D
T10	10-TXI-308	.236/.241	.029	.5625
T10	10-TXI-308A	.210/.215	.025	.5625
T15	15-TXI-308	.261/.266	.032	.5625
T20	20-TXI-308	.312/.317	.039	.5625
T25	25-TXI-308	.363/.368	.045	.8750
T27	27-TXI-308	.414/.419	.052	.8750
T30	30-TXI-308	.480/.485	.061	.8750
T40	40-TXI-308	.602/.607	.077	.8750
T45	45-TXI-308	.726/.731	.092	1.0000
T50	50-TXI-308	.847/.852	.107	1.2500
T55	55-TXI-308	.970/.975	.123	1.5000

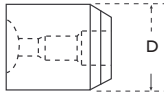
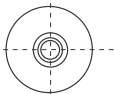


Holders for Torx® & Torx Plus® Punch Pins



Button Head

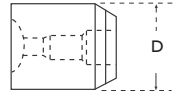
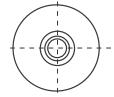
HEAD STYLE				
DRIVE SIZE	HOLDER TXP-26 BUTTON HEAD	BOWL DIA.	THEORETICAL BOWL DEPTH	HOLDER DIA. D
T10	10-TXI-301	.240/.244	.048	.5625
T10	10-TXI-301A	.264/.268	.046	.5625
T15	15-TXI-301	.314/.318	.063	.5625
T25	25-TXI-301	.368/.372	.080	.8750
T27	27-TXI-301	.447/.451	.108	.8750
T40	40-TXI-301	.558/.562	.122	1.0000
T45	45-TXI-301	.664/.668	.141	1.0000
T55	55-TXI-301	.890/.894	.207	1.2500
T60	60-TXI-301	1.010/1.014	.276	1.5000



Round Washer Head

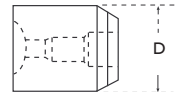
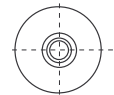
HEAD STYLE				
DRIVE SIZE	HOLDER TXP-32 ROUND WASHER	BOWL DIA.	THEORETICAL BOWL DEPTH	HOLDER DIA. D
T10	10-TXI-281	.175/.179	.060	.5625
T10	10-TXI-280	.196/.200	.069	.5625
T15	15-TXI-280	.222/.226	.091	.5625
T20	20-TXI-280	.265/.269	.094	.5625
T25	25-TXI-280	.295/.299	.107	.8750
T27	27-TXI-280	.339/.343	.156	.8750
T30	30-TXI-280	.394/.397	.149	.8750

Holders for Torx® & Torx Plus® Punch Pins



Socket Head

HEAD STYLE				
DRIVE SIZE	HOLDER TXP-23 SOCKET HEAD	BOWL DIA.	THEORETICAL BOWL DEPTH	HOLDER DIA. D
T10	10-TXI-300	.179/.183	.009	.5625
T10	10-TXI-300A	.204/.208	.009	.5625
T15	15-TXI-300	.224/.228	.010	.5625
T25	25-TXI-300	.268/.272	.010	.8750
T27	27-TXI-300	.312/.316	.017	.8750
T30	30-TXI-300	.375/.379	.022	.8750

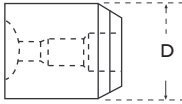
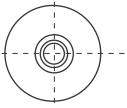


Fillister Head

HEAD STYLE				
DRIVE SIZE	HOLDER TXP-37 FILLISTER HEAD	BOWL DIA.	THEORETICAL BOWL DEPTH	HOLDER DIA. D
T10	10-TXI-371	.183/.187	.025	.5625
T10	10-TXI-370	.205/.209	.030	.5625
T15	15-TXI-370	.226/.230	.034	.5625
T20	20-TXI-370	.270/.274	.041	.5625
T25	25-TXI-370	.313/.317	.048	.8750
T27	27-TXI-370	.357/.361	.055	.8750
T30	30-TXI-370	.414/.418	.065	.8750
T40	40-TXI-370	.518/.522	.082	.8750
T45	45-TXI-370	.622/.626	.099	1.0000
T50	50-TXI-370	.625/.629	.100	1.0000
T55	55-TXI-370	.750/.754	.112	1.2500
T55	55-TXI-370A	.815/.819	.127	1.2500
T60	60-TXI-370	.875/.879	.143	1.5000



Holders for Torx® & Torx Plus® Punch Pins



Struck Slot Pan Head

HEAD STYLE

DRIVE SIZE	HOLDER TXP-33.4B STRUCK SLOT PAN HEAD	BOWL DIA.	THEORETICAL BOWL DEPTH	HOLDER DIA. D
T7	7-TXI-270	.161/.165	.020	.5625
T8	8-TXI-270	.187/.191	.022	.5625
T9	9-TXI-270	.212/.216	.025	.5625
T10	10-TXI-270	.238/.242	.027	.5625
T15	15-TXI-270	.263/.267	.033	.5625
T20	20-TXI-270	.314/.318	.037	.5625
T25	25-TXI-270	.365/.369	.041	.8750
T27	27-TXI-270	.416/.420	.048	.8750
T30	30-TXI-270	.483/.487	.055	.8750
T40	40-TXI-270	.605/.609	.068	1.0000
T45	45-TXI-270	.728/.732	.082	1.2500
T50	50-TXI-270	.848/.852	.095	1.2500
T55	55-TXI-270	.973/.977	.108	1.2500



Tooling International Ltd. Unit 8, Speedwell Trading Estate,
102 Kings Road Tyseley, Birmingham, England B11 2AT.

Tel: +44 (0) 121 771 0611 Fax: +44 (0) 121 773 6588
Web: www.tooling-international.co.uk Email: til@enterprise.net

**REG
ELLEN**
MACHINE TOOL CORP.

Phone: 815-964-0099

Fax: 815-964-0482

E-mail: sales@regellen.com

Web: www.regellen.com

